

香港交易及結算所有限公司及香港聯合交易所有限公司對本公告的內容概不負責，對其準確性或完整性亦不發表任何聲明，並明確表示，概不對因本公告全部或任何部份內容而產生或因倚賴該等內容而引致的任何損失承擔任何責任。



Beijing Jingneng Clean Energy Co., Limited

北京京能清潔能源電力股份有限公司

(於中華人民共和國註冊成立的股份有限公司)

(股份代號：00579)

海外監管公告

本公告乃根據香港聯合交易所有限公司證券上市規則第13.10B條作出。

茲載列北京京能清潔能源電力股份有限公司在上海證券交易所網站刊登的《北京京能清潔能源電力股份有限公司2020年公開發行公司債券(第一期)募集說明書摘要(面向合格投資者)》，僅供參閱。

特此公告

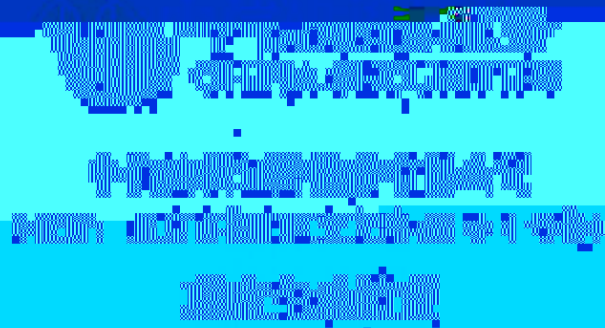
承董事會命
北京京能清潔能源電力股份有限公司
康健
公司秘書

中國·北京
2020年4月13日

於本公告刊發日期，本公司的非執行董事為劉海峽先生、任啟貴先生、李娟女士及王邦宜先生；本公司的執行董事為張鳳陽先生、朱軍先生及曹滿勝先生；而本公司的獨立非執行董事為黃湘先生、張福生先生、陳彥聰先生及韓曉平先生。

北京京能清洁能源环保科技股份有限公司 2020年公开发行公司债券（第一期）

主承销商



北京京能清洁能源环保科技股份有限公司
2020年公开发行公司债券（第一期）
发行公告

AAA

AAA

2,276,261.27

2019 9 30

197,234.03

2016

2017

2018

1.5

			395,615.21	393,560.81	392,273.62	
				-343,544.03	-357,867.48	-
344,621.50	2019	1-9			358,356.01	
				-345,552.03		
					128,953.01	
120,051.40	84,660.12	64,753.52				49.09%
48.43%	31.86%	30.60%				

		2018	68,449
8.49%		18.97	6.57%

2009

<http://www.lianhecreditrating.com.cn/>

<http://www.sse.com.cn>

.....**9**

.....9

.....13

.....13

.....17

.....17

.....**18**

.....18

.....18

.....20

.....**23**

.....23

.....23

.....30

.....33

.....34

.....43

.....48

.....57

.....67

.....107

.....114

.....114

.....115

.....**116**

.....116

.....	116
.....30971-T60.3	125
.....	126
.....5.....60.3...	

8,244,508,144.00

8,244,508,144.00

1993 2 3

91110000101718150E

1 118

H 00579

102101

010-64469988

010-87407009

010-64469736

2010

04 29

2018 6 28

2017

2019 7 2

2019

2019

2019 9 30

2019 1800

20

20

1

2

2020

3

10

10

4

100

5

3

5

6

7

16		2020	4	16	2023
4	15	2020	4	16	2025
15					
17					

29
AAA

AAA

30

2020 4 13

2020 4 14

2020 4 15

2020 4 17

1 118

010-87407062

010-64469736

9

7

010-58137799

010-58137788

100020

16

2

4

010-88095588

010-88091190

100077

22

010-85665588

010-85665120

100004

38

508

010-85172818

010-85171273

100022

3

010-68311546

010-68311546

528

021-68808888

021-68804868

166

3

021-38874800

021-58754185

2019 9

AAA

AAA

2020

www.sse.com.cn

www.lianhecreditrating.com.cn

AAA

AAA

1

2018 7

2

1

2

3

4

2018 7

3

1

5.31

2

3

2019 9

144.12

603.35

459.23

4-1

%

1	16	SCP001		10	270	2016-01-27	2016-10-23	2.97
2	16	SCP002		10	270	2016-02-25	2016-11-21	2.70
3	16	SCP003		10	270	2016-05-11	2017-02-05	3.02
4	16	SCP004		10	270	2016-06-17	2017-03-14	3.08
5	16	CP001		10	1	2016-07-07	2017-07-07	2.80
6	16	CP002		10	1	2016-08-23	2017-08-23	2.70
7	16	CP003		10	1	2016-10-28	2017-10-28	3.03
8	16	SCP005		10	270	2016-11-16	2017-08-13	3.27
9	17	SCP001		20	270	2017-03-09	2017-12-04	4.30
10	17	SCP002		20	270	2017-08-18	2018-05-15	4.58
11	17	SCP003		20	270	2017-11-13	2018-08-10	4.90
12	17	MTN001		20	5	2017-12-01	2022-12-01	5.50
13	17	SCP004		20	120	2017-12-14	2018-04-13	5.15
14	18	SCP001		10	240	2018-03-07	2018-11-02	4.98
15	18	MTN001		15	5	2018-04-03	2023-04-03	5.19
16	18	CP001		15	1	2018-04-27	2019-04-27	4.65

17 18

20 2019 9

227.63

8.79% 40%

4-2

	2019 9	2018	2017	2016
	0.73	0.75	0.48	0.35
	0.72	0.74	0.47	0.35

8,244,508,144.00

8,244,508,144.00

1993 2 3

91110000101718150E

1 118

H 00579

102101

010-64469988

010-87407009

010-64469736

2010

04 29

1 1993 2

1993 2 3

1993 1 29

3,000

1993 2 6

05222411

3,000

2004 11 18

[2004]45

2 2006 6

2006 10 26

[2006]333

50,000

2006 11 16

11000012224112

3 2009 5

2009 5 12

40,000

10,000

50,000

100,000

2009 5 25

110000002224112

4	2009	12			
	2009	12			
2009	9	30			
5,000			644.1224		4,355.8876
					100,000
100,644.1224					100,000
99.36%			644.1224		0.64%
			2009	12	29
			110000002224112		2006
					11
2056	11	15			16
					1
					118
5	2010	1			
2009	12	15			
2010	1	21			
	2009	9	30		
125,000				15,977.1088	109,022.8912
					100,644.1224
			116,621.2312		100,000
			85.748%		644.1224

0.552%		5,368.0753		4.603%	
		383.6839		0.329%	
	1,533.5692			1.315%	
	5,112.6748			4.384%	
3,579.1056				3.069%	
2010	3	19			
			[2010]366	2010	
3	25				
			[2010]214		
			2010	4	29
			110000002224112		

1		100,000	100,000	85.748%
2		5,368.0753	5,368.0753	4.603%
3		644.1224	644.1224	0.552%
4		383.6839	383.6839	0.329%
5		1,533.5692	1,533.5692	1.315%
6		5,112.6748	5,112.6748	4.384%
7		3,579.1056	3,579.1056	3.069%
		116,621.2312	116,621.2312	100%

2010

2010 6 13

2010 6 30

[2010]99 2010 8 3

H 1,032,200,000
 H 103,220,000 2011 12 22 H
 00579
 2012 1 13 H
 129,476,000 H 117,705,454
 H 11,770,546 6,149,905,454
 614,990.5454 6,149,905,454

2012 8 21
 110000002224112

1			417,932.1592	67.958%
2			22,434.8291	3.648%
3			2,690.4249	0.437%
4			1,603.5322	0.261%
5			6,575	1.069%
6		H	21,920	3.564%
7		H	15,345	2.495%
8		H	126,489.6	20.568%
		/	614,990.5454	100%

2013 10

2013 5 24

[2013]99 2013 10 8

[2013]1278 327,508,000 H 2013
 10 23 H 1,965,054,000 H
 6,47,741.3454
 6,477,413,454

2014 6 9

[2014]425

65,750,000

2013 12 17

2014 7 14

2014 7 14

110000002224112

1			417,932.1592	64.521%
2			22,434.8291	3.464%
3			9,265.4249	1.43%
4			1,603.5322	0.248%
5		H	196,505.4	30.337%
			647,741.3454	100%

2014 10

2014 6 16

[2014]98 2014 9 23

[2014]992

393,010,000 H

2014 10 7

H

2,358,064,000

H

687,042.3454

6,870,423,454

2016 9 22

91110000101718150E

1			417,932.1592	60.831%
2			22,434.8291	3.265%
3			9,265.4249	1.349%
4			1,603.5322	0.233%
5		H	235,806.4	34.322%
			687,042.3454	100%

2018 7

2017 8 9

[2017]105 2017 12 27

[2017]2448 902,471,890

471,612,800 H 2018 7 12

8,244,508,144

824,450.8144

8,244,508,144

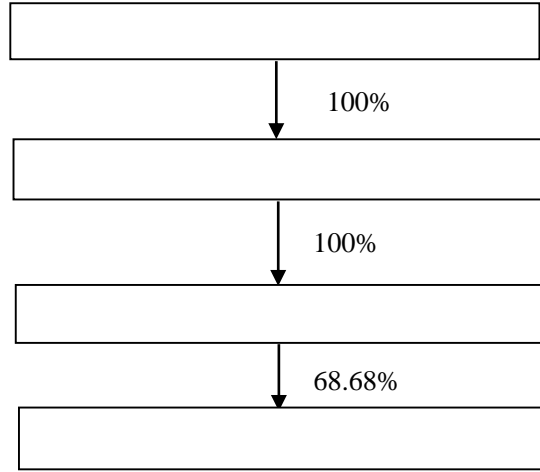
2018 8 29

9111000010171850E

1			508,179.3482	61.639%
2			22,434.8291	2.721%
3			9,265.4249	1.124%
4			1,603.5322	0.194%
5		H	47,161.28	5.720%
6		H	235,806.4	28.602%
			824,450.8144	100%

2019 9

6-1 2019 9



2019 9

1

2004 12 8

21,338,060,000

110000007832879

2

A 9

100022

010-85218888

010-85218832

www.powerbeijing.com

[2004]4

2004 12 8

			4
			2018 12
31	27,530,070.77	17,494,220.20	
2018	6,647,765.66	299,489.00	2019
9 30	28,734,907.62	18,422,678.26	
2019 1-9	4,409,405.98	321,711.49	

2

[2009]2

2008 12

[2008]76

74.24%

20%

5,000

/

2019 9 30

66

3

1

6-1 2019 9

%

1		74,729.73	6	74.00	
2		87,678.00	29	100.00	
3		32,577.00	15	100.00	

2020

4		76,051.20		100.00	
5		101,000.00	1	100.00	

2018		211,313.01	82,335.56
128,977.45	2018		223,357.81
30,402.74			

2019	9	187,499.60	35,963.76
151,535.84	2019	1-9	151,141.70
22,558.38			

2

		2003	9	10
32,577.00				
		100%		

2018		92,680.28	49,008.57
43,671.71	2018	102,050.88	4,107.13

2019	9	74,085.80	28,513.77
45,572.04	2019	1-9	69,483.77
1,900.32			

3

		2003	12	29
87,678.00				
100%				

-

2018 276,335.13 148,152.05
 128,183.08 2018 242,122.26
 27,448.77

2019 9 269,679.09 145,537.62
 124,141.47 2019 1-9 171,912.01
 20,662.28

4

2010 12 30
 76,051.20
 100%

2018 277,877.67 162,714.18
 115,163.49 2018 235,188.73
 30,750.06

2019 9 252,591.35 144,885.03
 107,706.31 2019 1-9 159,247.94
 20,217.88

5

2012 4 11
 101,000.00
 100%

2018 390,531.06 225,928.17
 164,602.89 2018 389,111.95 45,643.90

2019 9 324,434.50 128,349.34
 196,085.16 2019 1-9 253,904.15

31,482.26

6

2013 4 23

29,189.86

100%

2018 Q1A0	171,190.72	119,049.65
52,141.07	2018	67,809.77
		2,532.08

2019 9	173,481.00	120,
--------	------------	------

2018		60,600.41	25,605.61
34,994.80	2018	16,997.32	8,077.83

2019	9	63,216.51	22,087.62
41,128.89	2019	1-9	11,976.72
6,134.09			

9

		2002	3	20
9,000.00				
100%				

2018		26,622.39	6,448.35
20,174.04	2018	9,568.09	4,009.93
2019	9	27,485.20	4,470.48
23,014.72	2019	1-9	6,515.97

2,840.67

10

			2008	5	12
		79,235.00			
		100%			

2018		251,913.41	150,828.31
101,085.10	2018	36,355.51	
14,503.98			
2019	9	256,570.29	146,569.06

110,001.23 2019 1-9 25,397.97
 8,916.13

11

41,132.70 2010 10 10
 100%
 2018 144,462.63 94,452.04
 50,010.59 2018 19,839.92 6,284.57

2019 9 151,269.38 97,716.78
 53,552.60 2019 1-9 13,276.96
 3,542.01

12

25,924.80 2010 5 19 100%

2018 98,397.35 65,112.42
 33,284.93 2018 14,583.32 4,997.70

2019 9 95,887.07 59,644.76
 36,242.31 2019 1-9 9,529.68
 2,957.38

13

41,514.00 2011 3 15
 100%

2018 69,712.04 37,048.37
 32,663.67 2018 9,741.59 4,116.42
 2019 9 114,430.19 66,242.95
 48,187.24 2019 1-9 6,974.92 2,523.57

14

2014 3 25
 33,005.00
 100%
 2018 140,493.13 99,987.93
 40,505.20 2018 17,323.19 6,185.22
 2019 9 173,814.95 114,086.32
 59,728.64 2019 1-9 12,993.56
 5,118.81

6-2 2019 9

%

	32	2	806	63,000.00		24.21
			11	2,500.00		40.00
			2	6,000.00		50.00
			16			
	CBD		22	340,000.00		20.00

1

2007 8 1

63,000

24.21%

2004

2018

256,026.88

197,611.04

58,415.84

2018

0

0

2

2004 9 23

2,500

40.00%

2018

18,549.97

2018		6,783,259.17
4,095,086.84	2,688,172.33	2018
1,267,436.48	80,639.92	

3

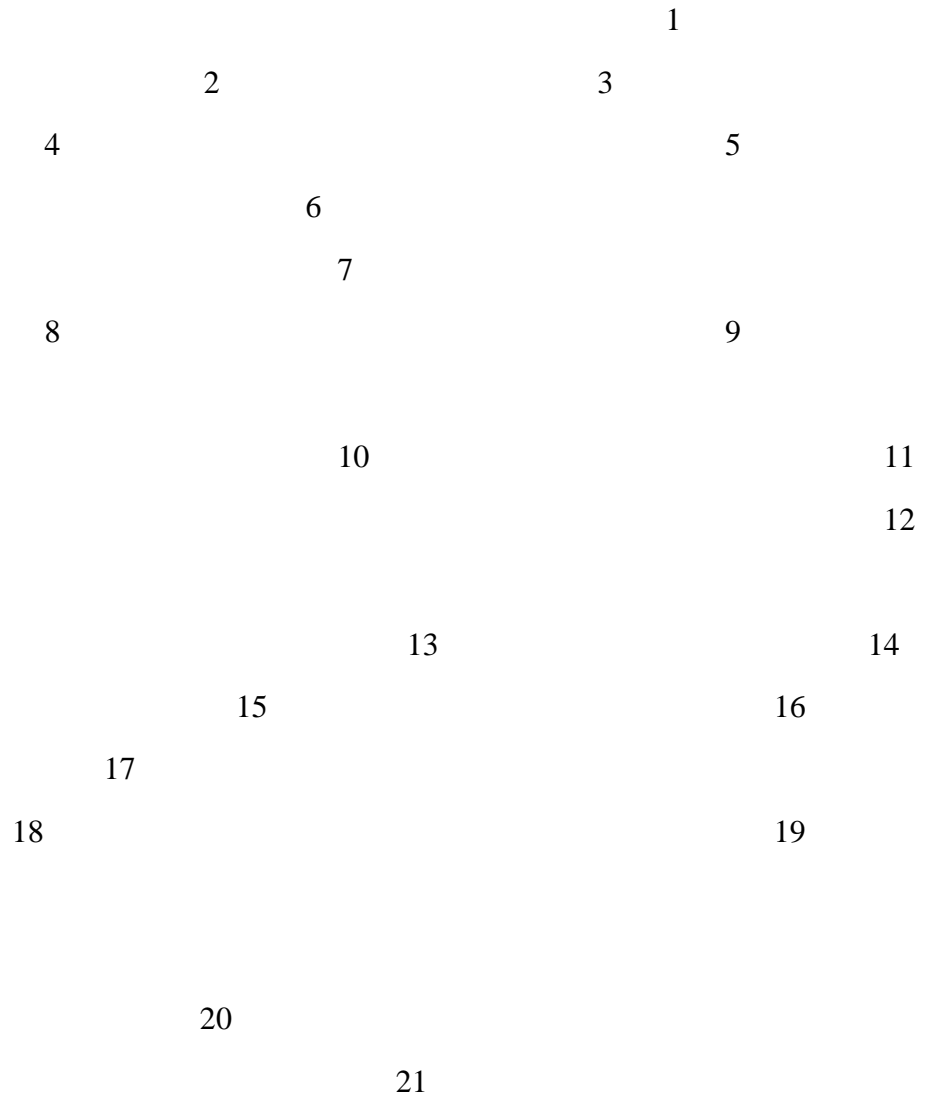
1

30%

3%

3%

2



6 7 14

3

3

1

2

3

4

5

6

7

8

9

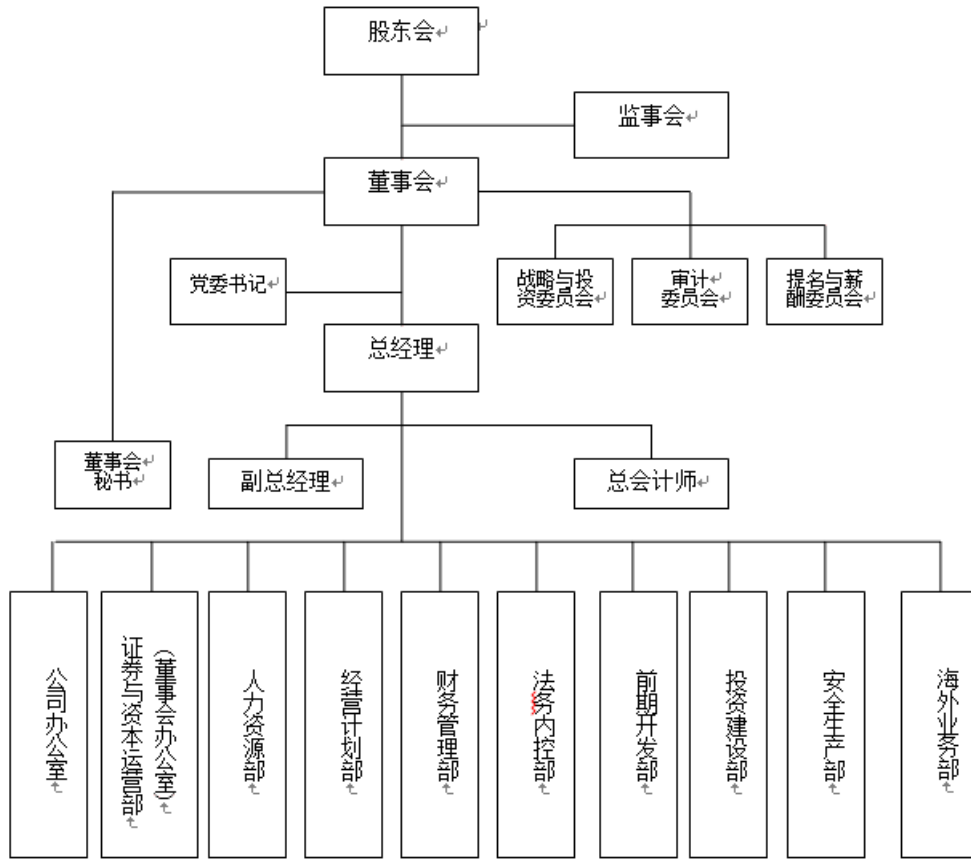
10

11

4

1

2



1

2

3

4

5

6

7

8

9

HSE

10

1

3

378 [2003]
[2009]

10

50

4

5

6

7

1

2

3

8

9

10

11

H

13

1

2

3

4

5

6

14

1

2

/

3

1 2 3
1 2
3
4 5
15
10%

6-3

			2018 6 28	

2019 6 20

			2019 6 20	-
			2019 6 20	-
			2016 12 29	-
			2015 6 25	-
			2016 12 29	
			2014 10 28	
			2019 6 20	
			2019 6 20	
			2010 1	-
			2018 5 25	-
			2018 5 25	
			2010 3	-

2018 5 25

2018

2018 6 28

2019 1 30

2019 6 20

1

1

1961 7

2018 6

1983 7 1985 8

1985 8 1991 5

1991 5 1994 3

1994 3 1998 8

1995 9 1998 7

1998 8 2000 2

2000 2 2000 4

2000 4 2004 3

2004 3 2004 12

2004 12 2009 5

2009

5 2014 12

2014 12

2000 4 2018 3

991

601991

1962 5 1986 8 1995 6

1995 6 2006 7

2006 7

2010 6

2010 6

2011 6

2011 6 2012 8

2012 8 2012

9

2012 9 2013

11

2013

11 2017 3

2017

3 2017 7

2017

7 2017 11

2017

11 2019 3

2019 3

1986 7

2008 6

1985 3

2018 6

2010 1 2015 1

2015 1 2016 11

2016 11 2017 8

2017 8 2018 3

2018

2007 9

2009 6

1973 8

2019 1 30

2000 8 2001 8

2005 7 2008 9

2008 9 2010 9

2010 9 2011 6

2011 7 2012 3

2012 4 2013 12

2013 12 2017 10

2014 2 2015 7

2015 7 2017 10

2017 4

1995 7

2000 6

2005 6

2008 11

2

1970 1

2018 2

1994 7 2000 9

2000 9 2003 10

2003 10 2004 7

2004 7 2007 4

2007 4 2009 7

2009 7 2013 11

2013 11 2018 6 2018

2

1968 2 1990 7 1998 12

1998 12 2003 4

2003 4 2004 12

2004 12 2009 3 2009

3 2010 3 2010 3

2017 11

2017 11 2018 1

2018

1 2018 5

2018 5 2018 6

2018 6 2019 6

1990 6

2010 12

1970 8 1993 7 2001 12

2001 12

2005 2

2005 2 2012 8

2012 8 2017 11

2017 11 2018 1

2018 1 2018 5

2018 5 2019 6

1993 7

2003 6

3

1956 6

2016 12

1982 7 1991 1

1991 1 1993 8

1993 8 2001 11

2001 11 2014 3

2004 3 2016 6

2016 6 1982 7

1955 5 2015 6

1990 6 1994 6

1994

1994 7 1997 4

1997 4 2001 1

2001 1

2004 9

2004 9 2006 9

2006 9 2008 9

2008 9 2013 5

1979 11

2016 12

2003 11 2010 7

2010 10 2011 4

2011 6 2012 7
2012 7 2013 8
02700 2014 2 2016
5 8019
2014 9
1220
2016 11
2023
2001 11
2011 11
1957 9 2014 10
1986 1988
1988 2000

2016 6
1281
2018 4
1671 2019 6 18
002015.sz

2
1964 8 1986 7 1988 7
1987 6 1988 6
1988 7 1994 9
1994 9 1997 5 1997 5

1998 12
 1999 9
 3
 2001 10
 2002 5
 2002 5 2004 11
 2004 12 2009 12
 2009 12 2013 6
 2013 6 2013 9
 2013 9 2018 5
 5 2018 9
 2018 9
 1986 7
 2004 7
 2008 1
 1972 11 1995 7 1998 1
 1998 1 2007 7
 2007 7 2010 3
 2010 3 2010 6
 2010 6 2013 4
 2013 4 2018 6
 2014 10
 2015 5 2018 7
 2015 6
 2017 12
 1 2018 6 2019
 2019 1
 1995 7
 2007 7

1968 8 16
2010 1 1993 12
2010 8
2010 8 2018 6
2018 6
3
1969 12 20
2018 5 1992 7 2003 8
2003 11 2004 11
2004 12 2007 9
2007 9 2009 7
2009 7 2012 3 2009 5
2012 3
2012 3 2014 10
2014 10 2016 8
2016 8 2017 3
2017 3 2018 1
1970 7
20 2018 5 1996
3 2004 12
2004
12 2018 5
2013 6
2015 11

1963 5 20
2010 3
1999 7 2000 2
2000 4 2003 3 Tucows
2004 1 2009 7
2009 8 2009 12 2009 12

2016-2018 2019 1-9 1,484,882.35
1,452,084.89 1,658,446.04 1,178,002.93

90.49% 88.95% 90.42%

9.38% 10.63% 9.31%

6-4

%

	2016		2017		2018		2019 1-9	
	1,343,622.14	90.49	1,291,609.75	88.95	1,469,497.77	88.61	1,065,173.46	90.42
	139,222.48	9.38	154,310.60	10.63	183,647.87	11.07	109,674.04	9.31
	496.70	0.03	154.73	0.01	388.91	0.02	104.97	0.01
	1,541.03	0.10	6,009.81	0.41	4,911.49	0.30	3,050.47	0.26
	1,484,882.35	100.00	1,452,084.89	100.00	1,658,446.04	100.00	1,178,002.93	100.00

2016-2018 1,202,044.16 1,158,334.81
 1,274,555.87 2017 2016 3.64%
 2017 9 29 2.51 / 2.41 / 2018
 10.03% 2018

6-5

	2016		2017		2018		2019 1-9	
	1,047,394.17	87.13	979,741.26	84.58	1,060,056.50	83.17	796,874.30	86.98
	153,730.09	12.79	177,289.79	15.31	212,964.33	16.71	119,046.16	12.99
	403.11	0.03	125.83	0.01	326.46	0.03	49.31	0.01
	919.90	0.08	1,177.93	0.10	1,208.58	0.09	211.34	0.02
	1,202,044.16	100.00	1,158,334.81	100.00	1,274,555.87	100.00	916,181.11	100.00

19.05% 20.23%
 23.15% 22.23% 2018 2017 2.92 2019 1-
 9 117.80 4.53%
 2018
 2019 9 25.19%
 22.23%

6-6

%

	2016		2017		2018		2019 1-9	
	296,227.97	22.05	311,868.49	24.15	409,441.27	27.86	268,299.16	25.19
	-14,507.61	-10.42	-22,979.19	-14.89	-29,316.46	-15.96	-9,372.12	-8.55
	93.59	18.84	28.90	18.68	62.45	16.06	55.66	53.02
	621.13	40.31	4,831.88	80.40	3,702.91	75.39	2,839.13	93.07
	282,435.08	19.05	293,750.08	20.23	383,890.17	23.15	261,821.82	22.23

6-7 2019 9

		2019 1-9	2019 1-9	%
	4,702	14,107,627.49	770,426.84	65.40
	2,348	3,465,572.40	150,969.32	12.82
	450	1,410,890.17	28,118.81	2.39
	1,415	1,472,501.58	115,658.49	9.82
	8,915	20,456,591.64	1,065,173.46	90.42

1

7

1

80%

2017 9 1

0.1 /

2.41 /

2017 11 15 2018 3 15

0.16 /

2.57 /

2017

2016

2.50 /

2018 7 10

2.39 /

2018 11 15

2019 3 15

0.23 /

2.62 /

2018

2017

2.47 /

2019 1-9

2.43 /

6-8

/

	2016	2017	2018	2019 1-9
	39.52	36.44	40.45	29.33
	2.51	2.50	2.47	2.43

6-9 2018

				/
	410	4,005	160,679	0.65
	780	4,315	326,225	0.65

0.495 /

4,702
838
255
2018
1308
780
266
845
410
2019 1-9

2005

2011 5 27

29
0.573 /
2014 1. **10**
0.528 /
0.538 /
2011 11
2011 12 1

0.65	2018		0.495
/		0.65	/
2016		4,436	2016
18,970,194.26			1,672,104.39
	4,078	3,364,295	
4,313		3,610,765.95	4,309
	1,080,922.59		4,239
	3,630,252.78	4,296	
5,611,853.55		4,290	
2017		4,436	2017
17,091,025.05			1,547,874.90
	3,866	2,959,418	
3,917		3,495,374.85	4,262
	946,942.15		3,833
	3,165,805.5	3,835	4,975,609.65
	3,896		
2018		4,702	2018
18,871,155			1,606,787
	4,005	3,262,248	4,315
	3,541,250		4,323
	1,060,477	4,281	
3,459,994		4,191	5,574,257
	4,363	366,142	1,407

2

60 °C

130 °C

24

11 15

3 15

24

11 15 3 15

2

2005

2007

2009

2018

2018

2,348.25

2018

50.43

2,177

82

2019 1-9

34.22

8.38%

6-10

	2018	2017	2016
--	------	------	------

3

2010 2020

2018

370

1,168

2018

15.00

33.33%

1,441

229

6-11 2018

%

		1,096,710.00	66.13
		170,148.21	10.26
		106,473.52	6.42
		59,386.40	3.58
		37,288.66	2.25
		1,470,006.79	88.64

1

2018

4,702

1,308

845

838

780

410

255

266

2019 1-9

1

90%

6-12

		/
2016-01-01	2017-08-31	2.51
2017-09-01	2017-11-14	2.41
2017-11-15	2018-03-15	2.57
2018-03-16	2018-07-09	2.41
2018-07-10	2018-11-14	2.39
2018-11-15	2019-03-15	2.62
2019-03-16	2019-04-30	2.39
2019-05-01	2019-06-30	2.31
2019-07-01	2019-09-30	2.31

2

2005

2011 5 27

2011 4 10 528.00

/MW 538.00 /MW 2011 11 29

2011 12 1 573.00 /MW 2014 1 20

2014 1 20

0.65 650.00 /MW

2

2005 2007
2018 2,348.25 62%

1

2018 1 1 2017 1 1
2018

0.75 0.85

2019 5 21

2019 882

2019 I

0.34 0.39 0.43 0.52

2020

0.29

0.34

0.38

0.47

2018

2020

2019

1

1

2020

2021

2021

1

1

2

2019 9

1

1

GDP
GDP

2008~2009

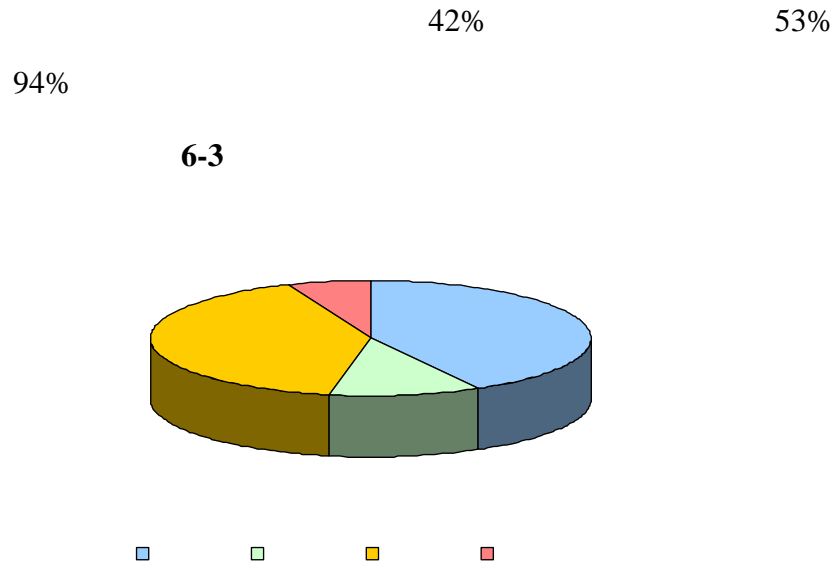
2010
14.56% 2011

	2017		6.31		6.6%
2016	1.6				
	40%				
			2017		6.31
	6.6%				
			2017		
17.8	7.6%	2016	0.6	2017	
					1,287
		13,372			
	3.41		4,578	2015	
1,822					
2018	68,449		8.49%		
728	9.80%		47,235		
7.17%	10,801		12.75%		
9,685	10.35%				
2019	72255		4.5%		
780	4.5%		49362		
3.1%	11863		9.5%		
10250	5.7%	2019			
10173	417	4092		2019	

2

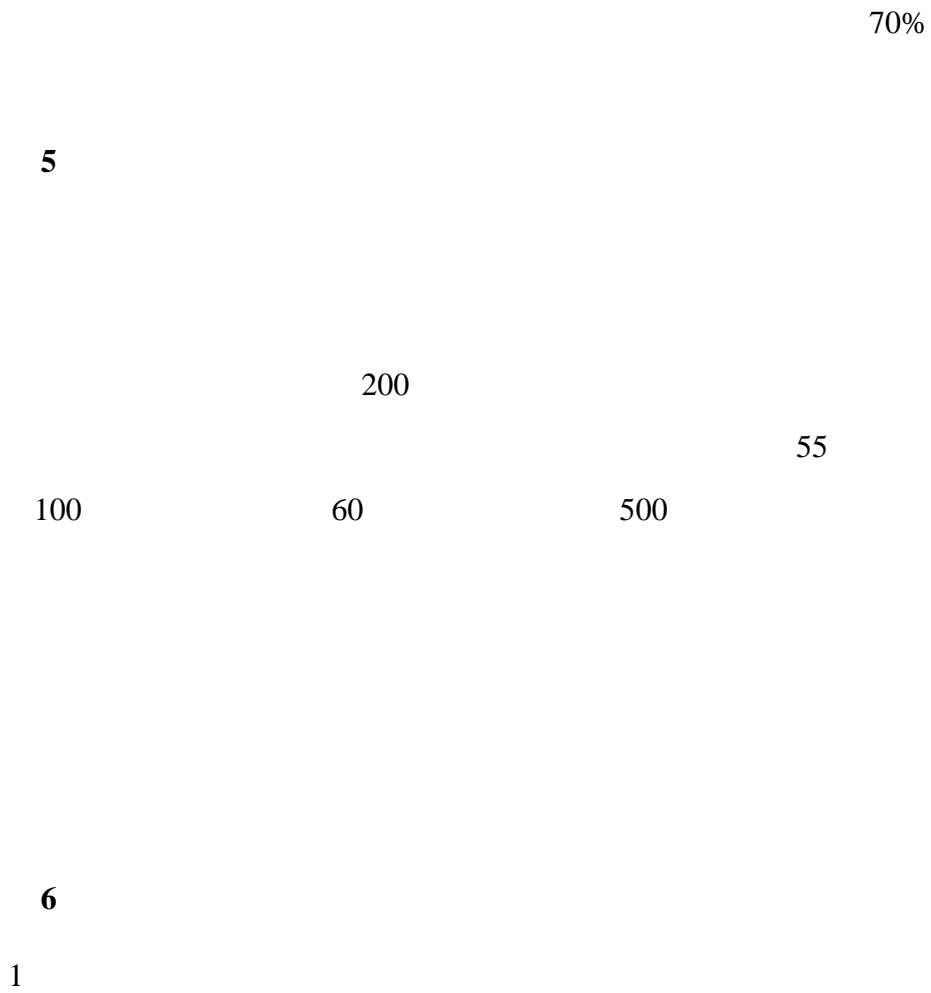
GDP

3



Wind

4





2020

15%

8

1

2

2020

2020

						2019
I	0.34	0.39	0.43	0.52		2020
	0.29	0.34	0.38	0.47		
			2018			2020
			2019	1 1	2020	
2021					2021	1 1

2

2016 12

1

2

3

4

5

6

7

2017 6

1
2020 7600 2.1% 2
2020 500
95% 8% 2017
2020
3 2020
2020 2015 17% 4
500
3,500 100%
15% 5
99.995% 27
5
10
9.5 7,000
95% 5
280 14
99.99% 7
9

6-13

类别	指标名称	单位	2015年		2020年		属性
			2015年	2020年	2015年	2020年	
总量与结构	★能源消费总量	万吨标准煤	6852.6	7600	2.1	约束性	
	★煤炭消费量	万吨	1165.2	500	-15.6	约束性	
	★煤炭消费比重	%	13.7	4.7	[-9]	约束性	
	油品消费量	万吨	1583.8	1600	0.2	预期性	
	油品消费比重	%	33.5	30.5	[-3]	预期性	
	天然气消费量	亿立方米	145.4	190	5.5	预期性	
	天然气消费比重	%	29	31.6	[2.6]	预期性	
	★可再生能源消费量	万吨标准煤	450	620	6.6	约束性	
	★可再生能源消费比重	%	6.6	8以上	-	约束性	
	全社会用电量	亿千瓦时	952.7	1100	2.9	预期性	
电力发展	电力装机容量	万千瓦	1071	1300	3.95	预期性	
	其中:燃气装机容量	万千瓦	846.7	994.4	3.3	预期性	
	可再生能源装机容量	万千瓦	47	200	33.6	预期性	
	全市供电可靠率	%	99.9886	99.995	[0.0064]	预期性	
节能减排	★单位地区生产总值能耗降幅	%	-	-	[17]	约束性	
	★单位地区生产总值二氧化碳排放降幅	%	-	-	[20.5]	约束性	
	电网综合线损率	%	6.89	6.73	[-0.16]	预期性	
能源惠民	居民人均生活用电量	千瓦时	808.7	1000	4.3	预期性	
	农网户均变电容量	千伏安	2左右	7	[5]	预期性	
	农网供电可靠率	%	99.95	99.99	[0.04]	预期性	

上表为五年累计数。主要指标共计20项,其中“★”为约束性指标。

6-14 2020

能源品种	2015年			2020年		
	实物量	标准量 (万吨标准煤)	比重(%)	实物量	标准量 (万吨标准煤)	比重(%)
煤炭 (万吨)	1165.2	937.7	13.7	500	360	4.7
调入电 (亿千瓦时)	537	1504.1	21.9	770(含外调 绿色电力 100亿千瓦时)	2300	30.3
天然气 (亿立方米)	145.4	1984.9	29	190	2400	31.6
油品 (万吨)	1583.8	2298.3	33.5	1600	2320	30.5
其他能源 (万吨标准煤)	127.6	119	1.9	220	220	2.9
合计		6852.6	100		7600	100

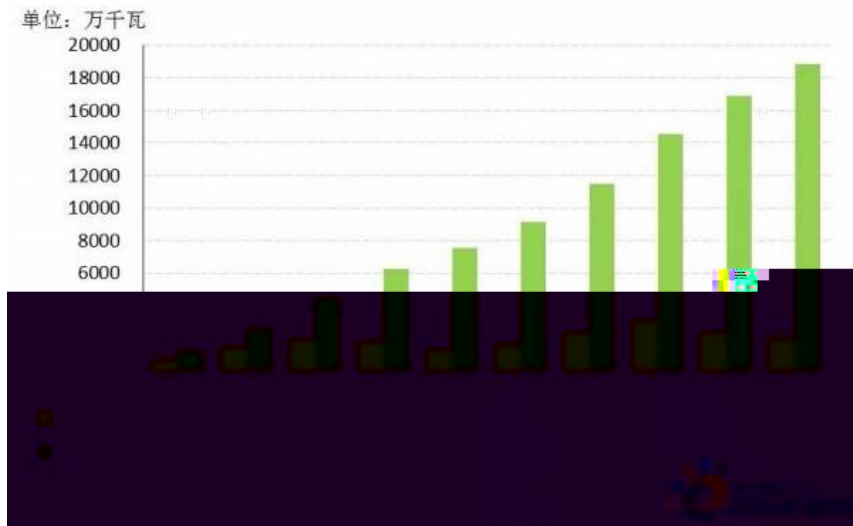
根据国家第二次经济普查统计口径平衡测算。

3

1

2023 51.3GW 2017 55GW 2018 GWEC

6-4 2008-2017

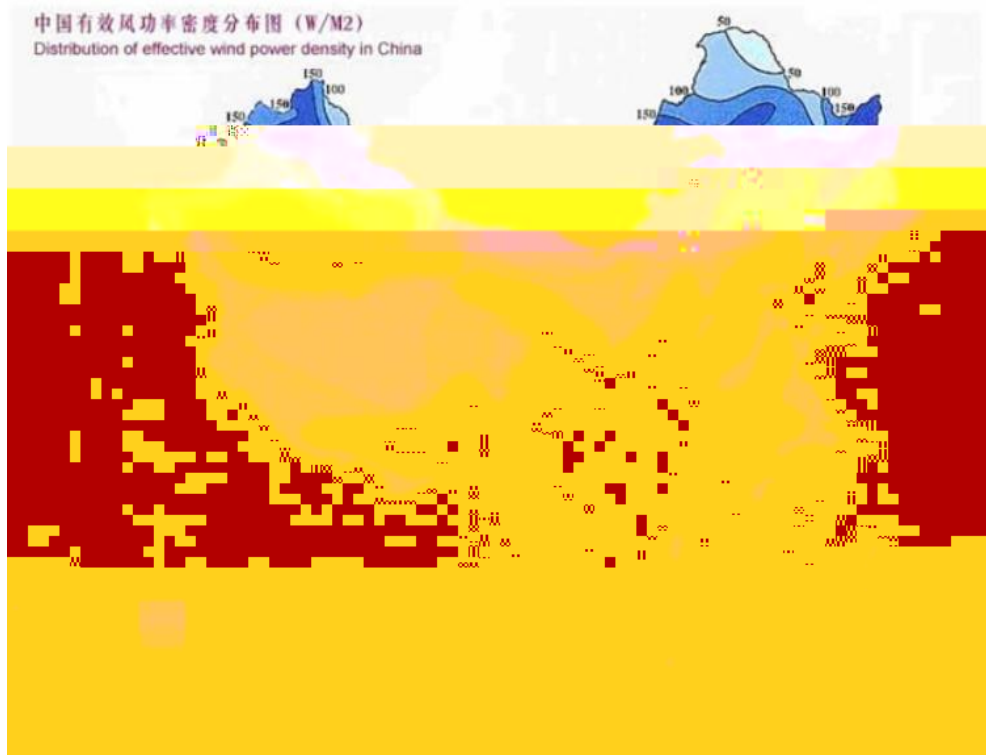


2

1

900
10 100 /
32.26 2.53
7.5 10
2,000 5,000
2,500 1.8 2.3
50
3,000

6-5



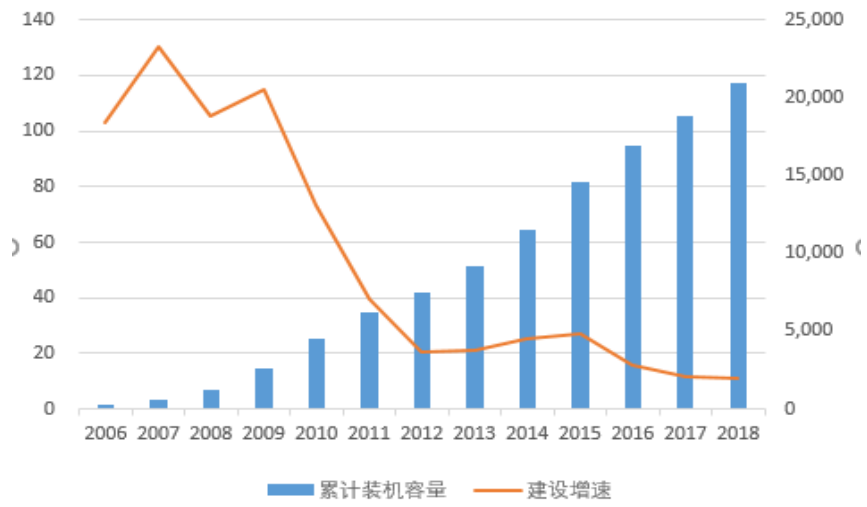
			/	200	
	200-300	/	500	/	
	2		79%		
		1,800		6,000	
			200	/	
			500	/	
	7,000-8,000				
		50			
				100	/
	3,000				
		10		7	
	20%	70%		20	

25 30

2

2018		1.84
2018	2,059	9.7%

6-6 2006-2018



Wind

3

2016 11

2020 2.1

500	4,200
-----	-------

6%

2005

2006 1

1

2 2011 11 30 12 1

3

2 6

0.4 0.8

2014 12 31

[2014]3008 2015 1 1

2015 1 1 2016 1 1

2

0.49 0.52 0.56 0.61

6-15

	2016	2018	
	0.47	0.44	
	0.50	0.47	
	0.54	0.51	
	0.60	0.58	

[2015]3044

2016 12

26

[2016]2729 2018 1 1

0.4

0.45 0.49 0.57

2019 5 21

[2019]882

1

2 2019 I

0.34 0.39 0.43

0.52 2020

0.29 0.34

0.38 0.47

3

4 2018

2020

2019 1 1 2020

2021

2021 1 1

4

2020

2015	14%	10%	2015	26%	33%
		50%			8%
					92%

1

2017	2352	17%	2010	75	2010
13%	20%				

2

63

2015

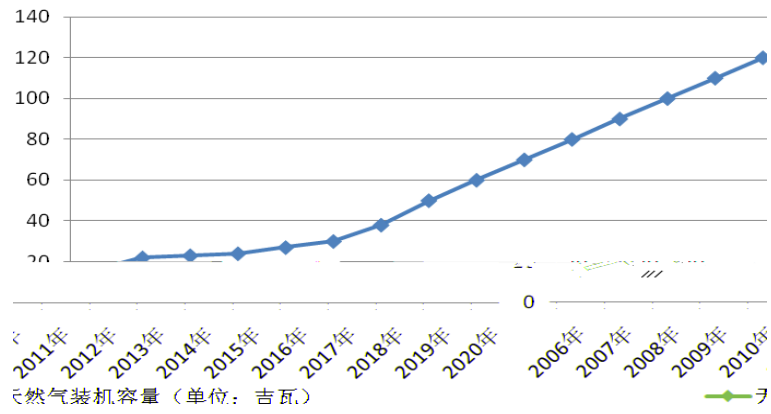
3

4

	2015	8.5
20%		70%
	100	3%

5,000 2015 2020 4,000
100 300 2015 2020

6-7



2

		2018		4,702
		1,308		845
838		780		410
	255	266		
				2018
		2,348.25	2018	
50.43		2,177		82
2019	1-9	34.22		8.38%

3

20% 2020 25% 2015

4

9F

5

6

1

1

2015

20% 2020

25%

2

3

2

[2010]30

1:1

63

2015

5.3

2

87.20

2019

2019 9

51.46

2019 9

6-16

2019 9

					2019 9
	50.00	3.92	0.78	3.14	1.13

					2019 9
	150.00	10.55	2.11	8.44	3.44
	200.00	13.00	2.60	10.40	3.45
50MW	50.00	3.54	0.71	2.83	1.19
	200.00	22.64	4.53	18.11	0.97
49.5MW	49.50	4.43	0.89	3.54	0.04
	699.50	58.08	11.62	46.46	10.22
50MWp	50.00	3.74	0.75	2.99	3.74
	20.00	1.47	0.29	1.18	1.05
	30.00	2.50	0.50	2.00	1.77
	100.00	6.34	1.27	5.07	5.62
	100.00	5.99	1.20	4.79	5.12
	110.00	7.04	1.41	5.63	7.51
	30.00	2.04	0.41	1.63	0.71
	440.00	29.12	5.83	23.29	25.52
	1,139.50	87.20	17.45	69.75	35.74

6-17

2020

2016-2018

1

1 /

6-18

%

	2018		2017		2016	
	11,459.43	93.13	10,441.19	98.40	12,340.56	79.05

	2018		2017		2016	
	3,581.10	15.71	3,677.70	16.95	5,856.01	31.34
	2,065.61	9.06	1,989.49	9.17	2,018.13	10.80
	2.73	0.01	-	-	-	-
	82.86	0.36	-	-	-	-
	7,482.08	32.83	6,691.06	30.84	6,587.70	35.26
	-	-	5.26	0.02	-	-
	6.89	0.03	159.30	0.73	192.96	1.03
	1,764.15	7.74	1,824.80	8.41	14.20	0.08
	7.42	0.03	9.86	0.05	-	-
	1,665.73	7.31	-	-	-	-
	699.06	3.07	1,905.57	8.78	1,889.18	10.11
	-	-		0.00	1.39	0.01
	4,923.19	21.60	4,557.64	21.01	2,105.49	11.27
	6.87	0.03	78.23	0.36	5.08	0.03
	242.15	1.06	592.45	2.73	-	-
	109.05	0.48	192.37	0.89	-	-
	-	-	11.61	0.05	14.86	0.08

%

	2018		2017		2016	
	-	-	58.67	4.82	-	-
	14.99	57.63	1,157.84	95.18	1,345.24	95.51
	-	-	-	-	49.53	3.52
	-	-	-	-	13.70	0.97
	11.02	42.37	-	-	-	-
	26.01	100.00	1,216.51	100.00	1,408.47	100.00

2

1

6-22 2016

		220,000.00	2013/8/15	2017/8/15
		80,000.00	2012/12/21	2017/12/20
		120,000.00	2012/7/3	2017/6/30

6-23 2017

		676.00	2015/3/23	2025/12/23
		1,332.00	2014/12/4	2025/12/23
		520.00	2015/6/8	2025/12/23
		1,016.00	2015/8/10	2025/12/23
		908.00	2015/11/12	2025/12/23
		680.00	2015/12/3	2025/12/23
		2,376.00	2016/6/6	2025/12/23
		560.00	2016/6/7	2025/12/23
		1,656.00	2016/12/1	2025/12/23

6-24 2018

		8,548.00	2014/12/4	2025/12/23

2

6-25

%

	2018		2017		2016	
	12,700.00	75.15	13,000.00	75.58	-	-
	3,000.00	17.75	-	-	-	-
	1,200.00	7.10	1,200.00	6.98	-	-
	-	-	3,000.00	17.44	-	-
	16,900.00	100.00	17,200.00	100.00	-	-

6-26

%

	2018		2017		2016	
	-	-	50,300.00	19.03	50,300.00	29.75
	169,925.00	90.91	198,025.00	74.92	106,800.00	63.16
	10,000.00	5.35	9,000.00	3.40	9,000.00	5.32
	7,000.00	3.74	7,000.00	2.65	3,000.00	1.77
	186,925.00	100.00	264,325.00	100.00	169,100.00	100.00

3

6-27

2018

2017

2016

3,906.61

4,392.09

-

2020

			2018	2017	2016
			27.27	27.02	49.53

%

		2018	12	31	2017	12	31	2016	12	31
		790.27		4.80	723.91		1.55	-		-
		12,643.62		76.82	42,780.29		91.83	35,859.73		96.58
		1,292.54		7.85	1,292.54		2.77	751.38		2.02
		954.51		5.80	25.28		0.05	29.45		0.08
		-		-	1,377.57		2.96	-		-
		-		-	1.15		0.00	-		-
		775.72		4.71	252.05		0.54	471.22		1.27
		-		-	131.61		0.28	18.19		0.05
		1.75		0.01	-		-	-		-
		16,458.41		100.00	46,584.40		100.00	37,129.97		100.00

2019 1-9

2016 2017 2018

2016 2018

2019 1-9

2016 2017 2018 2019 12016

	2019 9 30	2018 12 31	2017 12 31	2016 12 31
	435,878.80	556,907.79	339,210.07	186,931.11
			24,717.48	26,575.02

	2019 9 30	2018 12 31	2017 12 31	2016 12 31
	322,445.19	325,108.36	296,680.40	354,085.47
	-	310.10	8,923.32	5,150.11
	7,362.49	8,889.94	-	-
	8,973.67	9,071.21	9,103.39	8,142.85
	14,526.45	30,616.66	26,583.59	23,589.76
	40,074.62	42,331.97	25,500.89	25,947.29
	138,459.92	147,025.61	225,621.58	750,044.66
	660,646.34	600,790.53	600,623.43	600,569.51
	1,654,238.69	1,696,714.90	1,981,474.56	2,016,429.65
	1,185,646.29	1,164,035.02	905,948.81	896,501.28
	349,009.43	349,009.43	200,000.00	-
	21,458.13			
	29,476.11	29,597.97	29,958.36	40,847.53
	81,769.95	62,653.43	56,926.77	47,956.56
	12,510.13	12,542.40	14,154.18	9,618.13
	7,318.99	7,911.87	3,924.27	20,297.07
	1,687,189.03	1,625,750.12	1,210,912.39	1,015,220.57
	3,341,427.72	3,322,465.02	3,192,386.94	3,031,650.22
	824,450.81	824,450.81	687,042.35	687,042.35
	-	-	148,650.00	148,650.00
	388,085.79	388,085.79	223,570.67	223,027.87
	-17,988.63	-16,275.73	3,122.78	-13,593.38
	99,879.37	99,879.37	80,892.92	62,211.49
	935,765.04	827,599.26	711,209.47	599,856.29
	2,230,192.39	2,123,739.51	1,854,488.19	1,707,194.62
	46,068.88	39,747.58	56,912.14	48,780.77
	2,276,261.27	2,163,487.09	1,911,400.32	1,755,975.39
	5,617,688.99	5,485,952.11	5,103,787.27	4,787,625.61

2

7-2

	2019 1-9	2018	2017	2016
	1,178,002.93	1,658,446.04	1,452,084.89	1,484,882.35
	916,181.11	1,274,555.87	1,158,334.81	1,202,044.16
	13,290.77	21,897.83	17,094.30	11,216.68
	-	-	-	-
	34,762.09	53,295.84	46,379.94	41,217.03
	-	97.10	26.71	-
	83,661.47	119,903.52	105,162.53	99,813.17
	-	11,333.41	2,396.11	9,732.11
	-	1,387.62	-	-
	1,462.94	-6,074.52	-120.98	-10,199.25
	12,599.68	11,438.81	5,420.20	23,574.17
	10,383.19	7,887.97	4,795.86	21,283.53

	2019	2018	2017	2016
	1,326,160.12	1,797,664.09	1,640,270.43	1,687,323.95
	8,879.0	11,966.84	14,066.03	11,541.08
	82,035.33	98,659.06	134,056.75	108,406.89
	1,417,074.46	1,908,289.99	1,788,393.22	1,807,271.92
	807,725.40	1,054,089.20	1,031,718.53	1,096,392.85
	49,738.24	76,920.74	69,423.23	61,404.94
	141,529.64	209,128.35	167,158.09	139,702.90
	20,243.07	38,202.17	28,136.62	27,168.21
	1,019,236.36	1,378,340.47	1,296,436.48	1,324,668.90
	397,838.10	529,949.52	491,956.74	482,603.02
	500.00	14,200.00	600.00	27,000.00
	2,359.76	5,977.08	9,967.83	13,202.28
	2,674.92	192.11	95.51	14.67
	-	-	-	-
	7,269.31	27,282.93	25,030.00	11,854.23
	12,803.98	47,652.12	35,693.34	52,071.18
	338,263.07	349,790.82	354,576.10	374,558.06

	2019 1-9	2018	2017	2016
	1,289,765.91	2,718,745.67	2,753,466.00	1,726,512.81
	149,151.15	159,020.83	180,276.87	167,148.72
	14,967.89	89,272.37	80,124.77	45,059.14
	1,453,884.95	2,967,038.87	3,013,867.65	1,938,720.66
	-174,134.95	86,913.86	-43,566.61	-175,370.44
	-855.34	6,388.31	162.97	813.25
	-122,704.22	278,630.18	90,685.62	-35,498.20
	551,187.02	272,556.84	181,871.22	217,369.42
	428,482.80	551,187.02	272,556.84	181,871.22

1

7-4

	2019 9 30	2018 12 31	2017 12 31	2016 12 31
	89,815.53	168,047.75	151,365.77	24,344.34
	56,443.35	50,083.47	37,279.17	22,624.77
	2,710.15	1,284.04	338.26	301.76
	384,235.70	526,186.10	344,843.80	236,699.65
	215.80	283.71	78.85	88.35
	1,500.00	2,000.00	114,000.00	134,600.00
	918,375.86	765,400.51	426,817.90	476,870.96
	1,453,296.39	1,513,285.58	1,074,723.75	895,529.84
	-	-	12,802.75	12,802.75
	13,624.09	13,624.09	-	-
	1,863,509.33	1,802,351.21	1,706,236.69	1,672,162.35
	124,175.81	131,437.26	141,904.88	91,064.05
	3,717.44	3,662.51	2,833.57	75,934.53

	2019 9 30	2018 12 31	2017 12 31	2016 12 31
	687.44	736.74	474.02	512.81
	-	-	-	1,156.23
	4,131.91	4,131.91	4,389.62	1,795.32
	228,347.19	234,314.07	156,084.44	134,830.09
	2,238,193.22	2,190,257.79	2,024,725.97	1,990,258.13
	3,691,489.60	3,703,543.36	3,099,449.72	2,885,787.97
	266,900.00	406,970.52	393,000.00	104,000.00
	2,152.22	3,303.76	4,444.73	3,202.83
	-	-	-	-
	1,033.83	1,2 5		

	2019 9 30	2018 12 31	2017 12 31	2016 12 31
	2,057,967.40	2,063,958.22	1,780,202.82	1,651,411.86
	2,057,967.40	2,063,958.22	1,780,202.82	1,651,411.86
	3,691,489.60	3,703,543.36	3,099,449.72	2,885,787.97

7-6

	2019	1-9	2018	2017	2016
		14,126.25	28,037.42	33,754.52	21,634.74
		1,456.31	1,672.92	1,713.74	1,766.45

	2019 1-9	2018	2017	2016
	1,319.05	119,178.24	64,201.61	2,540.95
	1,129,922.76	2,278,242.89	2,439,628.38	1,359,236.73
	-111,022.76	403,393.84	-85,228.38	-42,355.41
	1.39	1,056.78	-27.10	24.14
	-78,232.22	77,941.98	66,021.43	4,940.62
	168,047.75	90,105.77	24,084.34	19,143.71
	89,815.53	168,047.75	90,105.77	24,084.33

2019 1-9

2019 9

8

66

2018

2018

2018

58

2017

2017

2017

2016

100%

2016

2016

2015

100%

2018

1

1

2017

14

2018 1 1

2018

2018 1 1

2018

7-7

		2018 1 1
		-
		-
		-
		-
		84,294,957.79
		-84,294,957.79
		-

2018 12 31

7-8

2018 12 31

	-
	-
	-
	-
	88,899,423.12

2019

	-88,899,423.12

2

2017

22

23

24

37

2018 1 1

1

2

3

2018 1 1

2018 1 1

2018

2018 1 1

7-9

		247,174,808.69			247,174,808.69
		-			-
		-			-
		128,027,500.00			-
					142,347,500.00
		4,313,479,265.31			4,313,479,265.31
					-
		232,095,284.26			-
					232,095,284.26
		-			-
					-

					-

2018 1 1

7-10

	2017 12 31			2018 1 1
	247,174,808.69	-247,174,808.69	-	-
	-	247,174,808.69	-	247,174,808.69
	4,313,479,265.31	-	-	4,313,479,265.31
	232,095,284.26	-	-	232,095,284.26
	-	-	-	-
	-	-	-	-
	-	-	-	-
	-	-	-	-
	524,101,608.36	-	-	524,101,608.36
	128,027,500.00	-128,027,500.00	-	-
	-	-	-	-
	-	-	-	-
	-	-	-	-
	-	-	-	-
	-	-	-	-
	-	128,027,500.00	14,320,000.00	142,347,500.00
	-	-	-	-
	-	-	-	-
	-	-	-	-
	-	-	-	-

2019

	2017 12 31			2018 1 1
	-	-	-	-
	31,227,846.88	-	10,740,000.00	41,967,846.88
	808,929,170.12	-	-	808,929,170.12
	7,112,094,654.64	-	-	7,112,094,654.64
	569,121,375.72	-	-	569,121,375.72

2017

2018

7-11

	2017 12 31			2018 1 1
	-	-	-	-
	3,319,878.77	-	-	3,319,878.77
	10,814,017.56	-	-	10,814,017.56
	-	-	-	-

3

2018

[2018]15

A

B

C

[2018]15

4

2018

5

9-12

9

[2017]16

2018

2017

1

7-12 2017

42 2017 5 28		1,970,180,860.93 0.00
16 2017 1 1	2017 2017 6 12 2017	1,179,638,208.34
2017 30		60,073.60 23,129,594.46 3,903,697.05

2

2017

3

2017

4

2017

2016

1

2016

2

2016

3

2016

7-13

	2019 2019	1-9 / 9	2018 / 2018	2017 / 2017	2016 / 2016
		561.77	548.60	510.38	478.76
		334.14	332.25	319.24	303.17
		281.25	282.50	275.35	257.98
		227.63	216.35	191.14	175.60
		117.80	165.84	145.21	148.49
		21.16	26.58	24.79	26.27
		16.95	20.24	19.70	21.87
		16.80	20.55	19.52	22.58
		16.32	19.39	18.86	20.92
		39.78	52.99	49.20	48.26
		-34.56	-34.46	-35.79	-34.35
		-17.41	8.69	-4.36	-17.54
		0.73	0.75	0.48	0.35
		0.72	0.74	0.47	0.35
%		59.48	60.56	62.55	63.32
%		55.27	56.63	59.03	59.50
%		22.23	23.15	20.23	19.05

	2019 2019	1-9 9	/	2018 2018	/	2017 2017	/	2016 2016	/
%		5.31		7.06		7.08		7.49	
%		7.63		9.93		10.74		12.96	
%		10.09		10.09		10.64		13.39	
EBITDA		47.76		60.05		57.61		54.55	
EBITDA		0.17		0.21		0.21		0.21	
EBITDA		5.27		4.92		5.22		5.53	
		2.11		3.40		3.65		4.24	
		74.57		103.56		89.55		91.58	

$$= + = + +$$

$$= + + +$$

$$= /$$

$$= - /$$

$$= /$$

$$= / +$$

$$= - /$$

$$= + /$$

$$/$$

$$\text{EBITDA} = + +$$

$$+ +$$

$$\text{EBITDA} = \text{EBITDA} /$$

$$\text{EBITDA} = \text{EBITDA} / +$$

$$= /$$

$$= /$$

2019 1800

10 10

1		19 SCP003	25.00	10.00	2020-04-21

1-9 2016 2017 2018 2019

9:00-11:30 14:00-17:00

1 118

6

010-64469988

010-8740709

/

66 4

2

B 2

010-65608354

010-65608445

www.sse.com.cn